

BMW 2 Series  
Coupe  
Convertible

[www.bmw.com](http://www.bmw.com)



Sheer  
Driving Pleasure



# THE NEW BMW 2 SERIES COUPÉ AND CONVERTIBLE.

**BMW EFFICIENT DYNAMICS.**  
LESS CONSUMPTION. MORE DRIVING PLEASURE.

International version. Please contact your local dealer for country specific information.





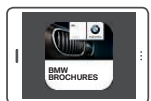
BMW stands for sheer driving pleasure. And the best thing about it is that each person can experience it in their own way. Discover the amazing diversity at [www.bmw.com/BMWstories](http://www.bmw.com/BMWstories)

## GET MORE FROM YOUR BROCHURES.

Films, image galleries and much more – discover exciting digital content on every page with a QR code.



All you need is a QR code reader which you can simply choose and download from the App Store. Start the reader and scan the code with your smartphone or tablet.



You can also discover everything about the BMW 2 Series Coupé and the BMW 2 Series Convertible in a digital brochure. Simply download it directly to your tablet from the BMW brochure app, which can be found in the App Store.

Internet use may incur costs, depending on your mobile contract.



**THE NEW BMW 2 SERIES COUPÉ.  
THE NEW BMW 2 SERIES CONVERTIBLE.  
THE ESSENCE OF FREEDOM.**

## THE MODELS SHOWN.

- 04 BMW 2 SERIES COUPÉ M235i:**  
M Performance TwinPower Turbo six-cylinder in-line petrol engine, 240kW (326hp), 18" M light alloy wheels Double-spoke style 436 M, exterior colour Melbourne Red metallic, seats in Dakota leather Black, Aluminium Hexagon interior trim finishers with high-gloss Black highlight trim.
- BMW 2 SERIES CONVERTIBLE 228i WITH SPORT LINE:**  
BMW TwinPower Turbo four-cylinder petrol engine, 180kW (245hp), 18" light alloy wheels Double-spoke style 384, exterior colour Glacier Silver metallic, seats in Dakota leather Coral Red, Fine Brushed Aluminium interior trim finishers with high-gloss Black highlight trim.

powered by 

## INNOVATION AND TECHNOLOGY.

- 24 BMW TWIN POWER TURBO ENGINES:**  
At the heart of BMW EfficientDynamics.
- 26 BMW EFFICIENT DYNAMICS:**  
Making fuel saving fun.
- 28 BMW CONNECTED DRIVE:**  
Services & Apps and Driver Assistance.
- 30 CHASSIS:**  
Innovative systems for more driving pleasure.
- 31 SAFETY:**  
Advanced technology at your service.

## INDIVIDUALITY AND ADAPTABILITY.

- 34 EQUIPMENT:** BMW Lines, BMW M Performance automobiles, equipment highlights, wheels and tyres and Original BMW Accessories.
- 50 COLOURS:** Exterior and interior colours.
- 54 TECHNICAL DATA:** Weight, engine, transmission, performance, fuel consumption, wheels, electrical system and dimensioned drawings.
- 58 BMW SERVICE:** BMW Service, BMW Financial Services and the BMW brand experience.



ANGELICALLY  
BEAUTIFUL. ▲

**The new  
BMW 2 Series Convertible.**  
A free spirit as refreshing as a  
breeze, inviting you to enjoy relaxed  
cruising – with the reassurance that  
you will always have lots of extra  
power in reserve. Take a seat and  
enjoy. Sheer Driving Pleasure is  
rarely this sensuous.



FIENDISHLY  
QUICK. ▼

**The new  
BMW 2 Series Coupé.**  
A rebel. Wild and passionate.  
The latest chapter in the long  
and illustrious history of the  
BMW Coupé is a particularly  
gripping one: press "Start",  
leave all conventions behind,  
and experience a new dimension  
of driving pleasure.



SEE ALL THE HIGHLIGHTS  
IN A SHORT VIDEO.





## THE BEST DUST IS THE ONE YOU LEAVE IN YOUR WAKE.

**The M235i xDrive takes 4.6 seconds to accelerate from 0 to 100km/h. But the exhilaration is instant.** The latest-generation BMW TwinPower Turbo engines and the optional eight-speed Steptronic Sport transmission in the new BMW 2 Series Coupé deliver up to 240kW (326hp), for maximum power combined with reduced fuel consumption. The design is equally sporting: the slightly forward-leaning kidney grille, long bonnet and dynamic wedge shape – everything about this car communicates movement. Care to come along?



FEEL THE SHEER DYNAMISM OF THE NEW BMW 2 SERIES COUPÉ.  
AN EXPERIENCE YOU WON'T FORGET!







OPEN THE DOOR  
TO EUPHORIA.



The moment you sit down in the cockpit of the new **BMW 2 Series Coupé**, you feel like you're at the centre of things. The upper part of the centre console is ergonomically inclined towards the driver, and the Control Display is perfectly placed in your field of vision. The frameless windows are particularly elegant, and flawless workmanship ensures that the high-quality, carefully matched materials are displayed to maximum effect.





AS UNBRIDLED  
AS YOUR PASSION.

**Dynamic performance is part of its DNA:** Every component in the new BMW 2 Series Coupé has been designed for maximum sportiness. The Launch Control of the optional eight-speed Steptronic Sport transmission for example takes you to top speed in the quickest time possible, by ensuring your tyres always have optimal grip. The entire vehicle concept with rear-wheel drive, optional adaptive suspension and optional variable sport steering is focused on a single aim: leading the field.







## THE FRONT: A STATEMENT.

**Air resistance is futile.** The front design of the new BMW 2 Series Coupé communicates its uncompromising forward urge: headlights ending in a sharp point keep a close watch on the road, while the contour lines on the bonnet mirror air flows. The integrated Air Curtain minimises drag and makes you faster. All in support of one goal: high performance for maximum driving enjoyment.



## THE REAR: A LASTING IMPRESSION.

**No roof, but plenty of style.** With the top down, the new BMW 2 Series Convertible looks particularly impressive: its low-slung, elegant silhouette emphasises sensuousness and agility, while the typical L-shaped single-unit taillights visually underscore the car's width and road-hugging stance. Leaving everyone else behind, you're out in front – followed by admiring glances.







## GO SAILING ON THE ROAD.

**Feels like being on a yacht.** Like the deck of a boat, the interior is inset into the body, surrounding you with elegance and comfort. And in vehicles with Steptronic transmission, Driving Experience Control provides another invitation to go sailing: when you take your foot off the accelerator in ECO PRO mode without applying the brakes, the system will uncouple the engine from the drivetrain, allowing you to coast along in quiet relaxation – thanks to innovative BMW EfficientDynamics technologies.







## RAIN? GREAT!

**Equally stunning with the roof up.** The softtop of the new BMW 2 Series Convertible looks just the part, and with its improved noise insulation minimises road noise. Opening and closing the softtop takes just 20 seconds and can be performed at speeds of up to 50km/h – probably the fastest sunrise you'll have ever experienced.







ALWAYS ASSURED AN OUTSTANDING RECEPTION.



**On the road, yet in touch with the whole world.** Thanks to BMW ConnectedDrive the new BMW 2 Series Convertible offers you a whole host of optional Services and Apps to make your journey safer and more enjoyable. Using a music flat rate account with a BMW music partner the optional BMW Online Entertainment enables you to access up to 22 million songs, allowing you to choose the right soundtrack for any occasion. Just pick and go.









## INNOVATION AND TECHNOLOGY.

**BMW TWIN POWER TURBO ENGINES:** At the heart of BMW EfficientDynamics.

**BMW EFFICIENT DYNAMICS:** Making fuel saving fun.

**BMW CONNECTED DRIVE:** Services & Apps and Driver Assistance.

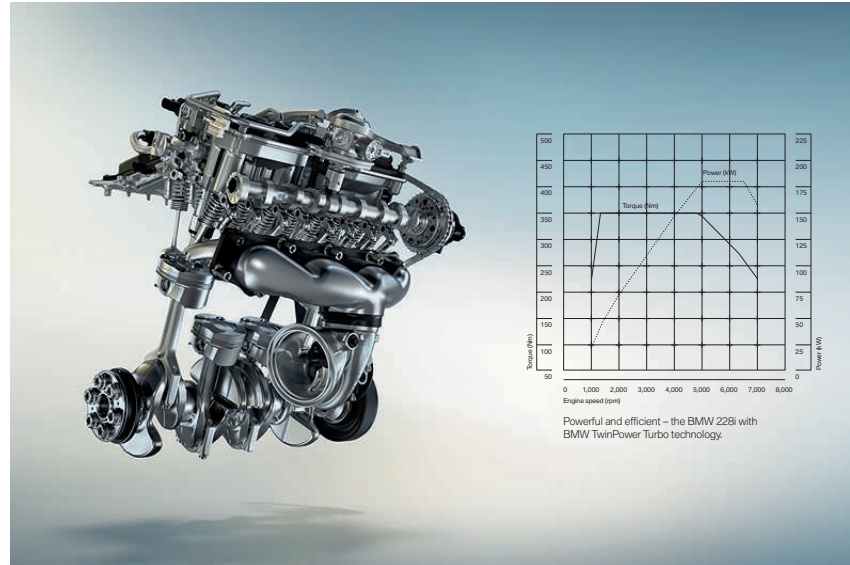
**CHASSIS:** Innovative systems for more driving pleasure.

**SAFETY:** Advanced technology at your service.



## BMW TwinPower Turbo engines. At the heart of BMW EfficientDynamics.

Thanks to BMW TwinPower Turbo technology, the innovative new generation of BMW petrol and diesel engines from the BMW EfficientDynamics engine family can achieve agile performance and excellent responsiveness even at low rpms, while at the same time featuring exceptionally low fuel consumption and emissions. Increased efficiency and optimal dynamics guarantee noticeably more intense driving pleasure.



### BMW TWIN POWER TURBO FOUR-CYLINDER PETROL ENGINE 228i.

The BMW TwinPower Turbo four-cylinder petrol engine achieves a peak output of 180kW (245hp), while ensuring an impressively low combined fuel consumption of just 6.6 litres per 100km in the Coupé, and 6.8 litres per 100km in the Convertible. Featuring a TwinScroll turbocharger with Valvetronic, Double-VANOS and High Precision Injection, this engine provides a maximum torque of 350Nm at the low engine speed of 1,250rpm.

### BMW M235i/M235i xDrive<sup>1</sup>.

- M Performance TwinPower Turbo six-cylinder in-line petrol engine with 240kW (326hp) and 450Nm torque
- Acceleration 0–100 km/h:  
5.0sec (Coupé)/4.6sec (M235i xDrive)/5.2sec (Convertible);  
top speed: 250km/h<sup>2</sup> (Coupé)/250km/h<sup>2</sup> (M235i xDrive)/  
250km/h<sup>2</sup> (Convertible)
- Combined fuel consumption:  
8.1 litres/100km<sup>2</sup> (Coupé)/7.8 litres/100km<sup>2</sup> (M235i xDrive)/  
8.5 litres/100km<sup>2</sup> (Convertible)
- Combined CO<sub>2</sub> emissions:  
189g/km<sup>2</sup> (Coupé)/182g/km<sup>2</sup> (M235i xDrive)/  
199g/km<sup>2</sup> (Convertible)

### BMW 225d.<sup>1</sup>

- BMW TwinPower Turbo four-cylinder diesel engine with 160kW (218hp) and 450Nm torque
- Acceleration 0–100km/h: 6.3sec;  
top speed: 242km/h
- Combined fuel consumption: 4.7 litres/100km<sup>2</sup>
- Combined CO<sub>2</sub> emissions: 124g/km<sup>2</sup>

### BMW 228i.

- BMW TwinPower Turbo four-cylinder petrol engine with 180kW (245hp) and 350Nm torque
- Acceleration 0–100km/h:  
5.8sec (Coupé)/6.1sec (Convertible);  
top speed: 250km/h<sup>2</sup> (Coupé)/250km/h<sup>2</sup> (Convertible)
- Combined fuel consumption:  
6.6 litres/100km<sup>2</sup> (Coupé)/6.8 litres/100km<sup>2</sup> (Convertible)
- Combined CO<sub>2</sub> emissions:  
154g/km<sup>2</sup> (Coupé)/159g/km<sup>2</sup> (Convertible)

### BMW 220d/220d xDrive<sup>1,4</sup>.

- BMW TwinPower Turbo four-cylinder diesel engine with 140kW (190hp) and 400Nm torque
- Acceleration 0–100km/h:  
7.1sec (Coupé)/–sec (220d xDrive)/7.5sec (Convertible);  
top speed: 230km/h (Coupé)/–km/h (220d xDrive)/  
225km/h (Convertible)
- Combined fuel consumption:  
4.1–4.4 litres/100km<sup>2</sup> (Coupé)/– litres/100km<sup>2</sup> (220d xDrive)/  
4.4–4.7 litres/100km<sup>2</sup> (Convertible)
- Combined CO<sub>2</sub> emissions:  
107–115g/km<sup>2</sup> (Coupé)/–g/km<sup>2</sup> (220d xDrive)/  
116–124g/km<sup>2</sup> (Convertible)

### BMW 220i.

- BMW TwinPower Turbo four-cylinder petrol engine with 135kW (184hp) and 270Nm torque
- Acceleration 0–100km/h:  
7.0sec (Coupé)/7.5sec (Convertible);  
top speed: 235km/h (Coupé)/231km/h (Convertible)
- Combined fuel consumption:  
6.1–6.3 litres/100km<sup>2</sup> (Coupé)/  
6.5–6.8 litres/100km<sup>2</sup> (Convertible)
- Combined CO<sub>2</sub> emissions:  
142–148g/km<sup>2</sup> (Coupé)/152–159g/km<sup>2</sup> (Convertible)

### BMW 218d.<sup>1</sup>

- BMW TwinPower Turbo four-cylinder diesel engine with 105kW (143hp) and 320Nm torque
- Acceleration 0–100km/h: 8.9sec;  
top speed: 213km/h
- Combined fuel consumption: 4.3–4.5 litres/100km<sup>2</sup>
- Combined CO<sub>2</sub> emissions: 114–119g/km<sup>2</sup>

### BMW 218i.<sup>4</sup>

- BMW TwinPower Turbo three-cylinder petrol engine with 100kW (136hp) and 220Nm torque
- Acceleration 0–100km/h:  
8.8sec (Coupé)/9.4sec (Convertible);  
top speed: 212km/h (Coupé)/207km/h (Convertible)
- Combined fuel consumption:  
– litres/100km<sup>2</sup> (Coupé)/– litres/100km<sup>2</sup> (Convertible)
- Combined CO<sub>2</sub> emissions:  
–g/km<sup>2</sup> (Coupé)/–g/km<sup>2</sup> (Convertible)

**BMW EFFICIENTDYNAMICS.**  
LESS CONSUMPTION. MORE DRIVING PLEASURE.

powered by 

<sup>1</sup> Only available for the BMW 2 Series Coupé.

<sup>2</sup> Fuel consumption and CO<sub>2</sub> emissions are dependent on the selected wheel and tyre size. For further information see pages 54 | 55 and 56 | 57 or consult your BMW partner.

<sup>3</sup> Electronically limited.

<sup>4</sup> Due to become available from 03/2015. Preliminary values based on the ECE test cycle that still await official confirmation; missing values were not available at the time of going to press.

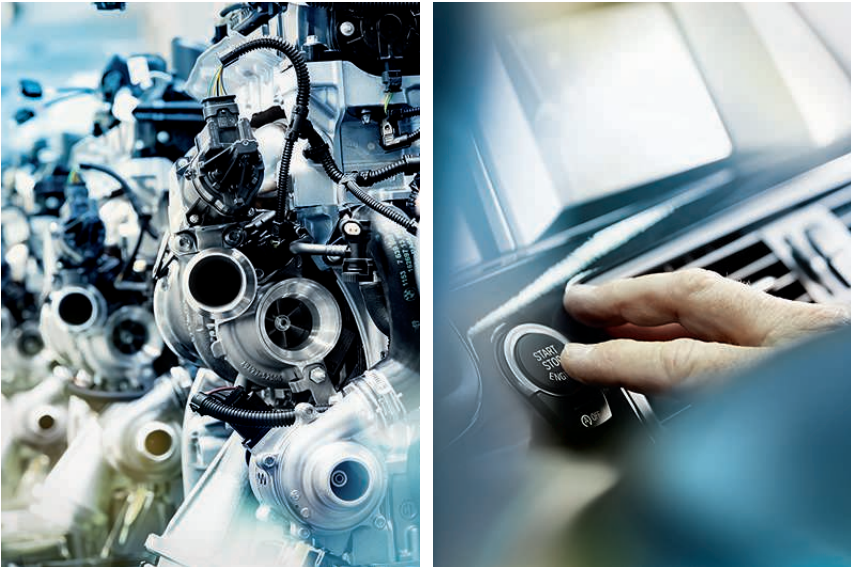
Performance, fuel consumption and CO<sub>2</sub> emissions figures are for vehicles with standard transmission.



# BMW EfficientDynamics

Less consumption. More driving pleasure.

Whether the goal is maximum performance or minimum fuel consumption – for BMW, the focus is always on delivering quintessential BMW driving pleasure. BMW EfficientDynamics is the strategy developed by BMW to minimise fuel consumption and emissions while simultaneously increasing dynamics and driving pleasure. It is a comprehensive technology package that encompasses the engine, energy management and the vehicle concept – and is standard in every BMW.



## OUTSTANDING: DRIVING EXPERIENCE CONTROL INCL. ECO PRO MODE.

Driving Experience Control lets the driver choose between COMFORT mode, for the standard engine and transmission settings, ECO PRO mode, which is geared towards greater efficiency, and SPORT mode, which enables even more dynamic driving. ECO PRO mode adjusts the characteristics of the accelerator pedal and transmission as well as the heating/air conditioning settings to make the drive as fuel-efficient as possible. ECO PRO mode reduces fuel consumption by up to 20 percent<sup>1</sup>. Further fuel savings can be achieved using the Coasting mode, the Route-Ahead Assistant and ECO PRO Route<sup>2</sup>.



## ENGINES.

The **BMW TwinPower Turbo petrol engines** feature remarkably agile power delivery and excellent responsiveness, even at low engine speeds. At the same time they are more efficient, with fewer emissions and better performance than their predecessors.

The new **BMW TwinPower Turbo diesel engines** are characterised by outstanding responsiveness and agile power delivery at all engine speeds. They are also breathtakingly dynamic, highly fuel-efficient and produce few emissions.

## VEHICLE CONCEPT.

Thanks to targeted **aerodynamic measures**, every BMW boasts excellent air resistance figures. This has a positive impact on efficiency and driving stability, and reduces the level of noise in the interior. These features include the flat undercarriage cover and the Air Curtain in the front apron.

## ENERGY MANAGEMENT.

In conjunction with the navigation system Professional, the **ECO PRO Analyser** evaluates the driver's driving style – before, during and after a journey – and how efficiently they accelerate, brake and change gear. This information appears on the display during the journey. These useful ECO PRO tips help the driver to adopt an even more efficient way of driving.

The **eight-speed Steptronic transmission** ensures smoother gear shifts and greater driving comfort, thanks to fast engine speed transitions and short shift times. It unites outstanding comfort with impressive dynamics and increased fuel efficiency.

The **route-ahead assistant** is a function included in the ECO PRO mode and it helps the driver to adopt a more efficient way of driving. In conjunction with the navigation system Professional, it recognises bends, built-up areas, roundabouts, T-junctions, speed limits and motorway exits along the chosen route and gives tips in advance about when to stop accelerating.

Whenever the driver takes their foot off the accelerator without braking, the **coasting function** (a component of the ECO PRO mode) cuts the power between the engine and drive in vehicles with eight-speed Steptronic transmission. The vehicle rolls along without any resistance from the engine, which rotates at idle speed consuming a minimum of fuel and with minimal emissions.

The **Optimum Shift Indicator** shows the most efficient gear for a given driving situation. This display appears in the cockpit of all BMW models with a manual transmission or the Steptronic transmission (in manual mode) and helps the driver to drive more fuel-efficiently, especially in urban traffic and on long-distance journeys.

<sup>1</sup> Depending on individual driving style, according to an internal BMW fuel consumption study.  
<sup>2</sup> Only available in conjunction with navigation system Business or navigation system Professional.



# BMW ConnectedDrive

So connected you're free.

Our everyday lives are becoming more and more connected. BMW drivers, however, enjoy better connections than most. They can source information, communicate by telephone and email, keep an eye on the traffic and generally stay up to date while on the move. The services that so effectively network BMW vehicles with the outside world are grouped under one term – BMW ConnectedDrive<sup>1</sup>.



The **ConnectedDrive Services\*** option seamlessly connects you to everything that's important to you, and to the people you want to be close to. Every feature has been designed to enhance your driving experience. The ConnectedDrive Services offer a comprehensive selection of Services & Apps – such as Facebook, web radio and the message dictation. In this way, it is always up to you to decide which of the many and varied services you want to use.

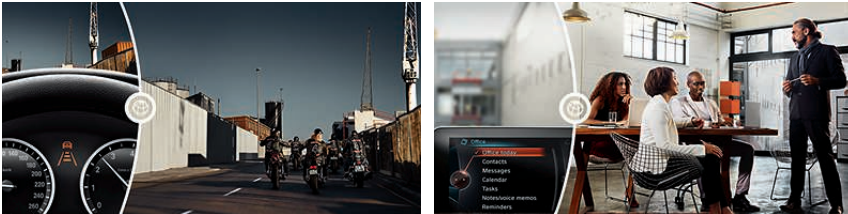
<sup>\*</sup> May not be available in all countries. Please consult your BMW partner.  
<sup>1</sup> For further information on BMW ConnectedDrive please visit <http://www.bmw.com/connecteddrive>

The images shown here are equipment examples. Features are individually specific to every BMW. Depending on the model, the Control Display and presentation of content may differ.

BMW ConnectedDrive with its intelligent services and assistance systems is ready with all the right equipment. **BMW ConnectedDrive Services & Apps** offer more freedom by providing versatile connections between the driver, vehicle and the outside world. **BMW ConnectedDrive Driver Assistance systems** make driving a BMW safer and more comfortable. And intelligent systems make life easy for the driver and minimise the dangers of traffic.



**Online Entertainment<sup>2</sup>** enables you to open a music flat-rate account with a BMW music partner such as Napster that can also be used on any other device supported by the provider. This gives you unlimited access to up to 22 million music titles.



The **Driving Assistant<sup>3</sup>** combines Lane Departure Warning, Approach Warning and Attentiveness Assistant. At speeds between 10 and 60km/h the Approach Warning and Pedestrian Warning system with city braking function alerts you to any impending collisions, and if required will apply the brakes. At speeds above approximately 70km/h, the Lane Departure Warning alerts the driver if the vehicle threatens to stray out of its lane, by making the steering wheel vibrate.

Making even better use of commute time with **Bluetooth Office**. Thanks to a Bluetooth connection, emails, appointments, tasks and text messages can be shown on the Control Display or read aloud over the audio speakers. A list of all compatible mobile devices is available at [www.bmw.com/bluetooth](http://www.bmw.com/bluetooth).

<sup>2</sup> Requires ConnectedDrive Services equipment and navigation system Professional.  
<sup>3</sup> System performance may be limited in dark and foggy conditions.

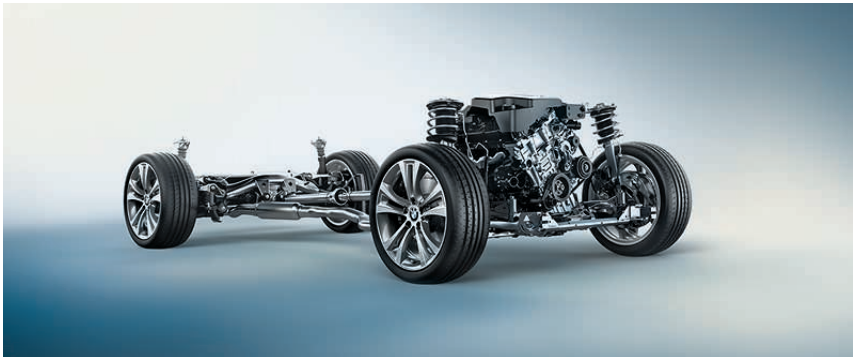
EXPERIENCE THE FASCINATION OF  
BMW CONNECTED DRIVE.





# Chassis.

Innovative systems for more driving pleasure.



The intelligent **all-wheel xDrive system** adapts perfectly to even the most challenging road surface conditions, always offering outstanding traction. With xDrive and Dynamic Stability Control (DSC), the vehicle remains directionally stable and on track. Split second response times allow xDrive to distribute drive power flexibly between the two axes for optimum grip. In this way, xDrive combines the advantages of all-wheel drive – traction, directional stability and safety – with classic BMW agility.

The **rear-wheel drive** forms the basis for classic BMW steering precision, agility and sporty driving characteristics. Seeing as propulsion comes from the rear instead of the front wheels, it enables highly sensitive steering and the ideal weight distribution of 50:50. This ensures great traction and directional stability on bends.

The optional automatic **eight-speed Steptronic Sport transmission** adapts to suit individual driving styles. It ranges from comfortable cruising to very dynamic handling. In SPORT mode, the gear shifts are configured for maximum performance. It is also possible to change gears manually by using the gear lever or the gearshift paddles on the steering wheel.

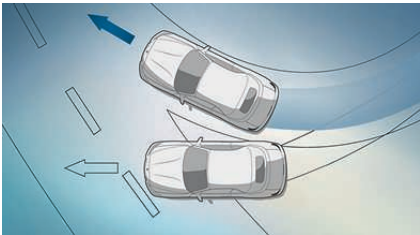
The optional **Adaptive M suspension** includes variable damper control. The driver can choose between comfortable or dynamic suspension settings using the Driving Experience Control. The suspension has been lowered by 10mm in order to emphasise the car's sporty appearance and further increase agility.

The optional **variable sport steering** with Servotronic creates a direct and agile steering response and ensures less physical effort is required to turn the wheel. It reacts to the angle of the steering wheel with varying steering ratios. This improves handling when driving more dynamically and makes parking and turning easier.

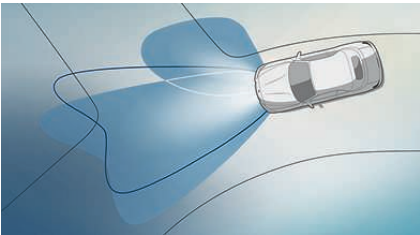
An ideal **axle load distribution of 50:50** helps ensure great directional stability, agile handling and a precise steering response. A lower centre of gravity, along with a long wheelbase with short overhangs, generates optimal conditions for these positive driving characteristics.

# Safety.

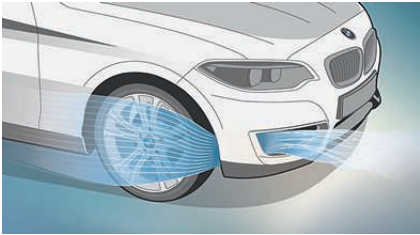
Unparalleled safety with the latest BMW technology.



■ **Dynamic Stability Control (DSC)** recognises any risk of skidding and stabilises the vehicle.



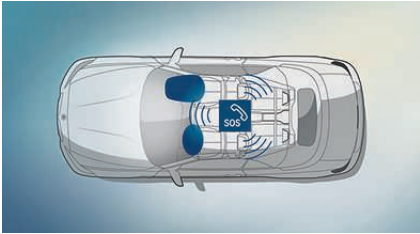
□ **Adaptive headlights** with variable light control provide optimal illumination in every situation and therefore help to improve active safety.



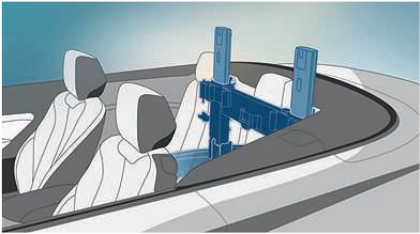
■ **The Air Curtain** channels the air flow at the front apron and front wheels, thereby reducing turbulence, air resistance and fuel consumption.



■ **Tyre pressure monitor.** Sensors on each wheel assess the tyre pressure and temperature and the tyre pressure monitor warns the driver of any loss of pressure.



■ **Intelligent emergency call\*** automatically establishes a connection with the nearest rescue coordination centre through the BMW call centre whenever needed – without the use of a mobile phone.



■ **The fully recessed roll-over protection system** features roll bars which extend automatically should the vehicle ever overturn, thereby protecting occupants in the Convertible.





# INDIVIDUALITY AND ADAPTABILITY.

**EQUIPMENT:** BMW Lines, BMW M Performance automobiles, equipment highlights, wheels and tyres and Original BMW Accessories.

**COLOURS:** Exterior and interior colours.

**TECHNICAL DATA:** Weight, engine, transmission, performance, fuel consumption, wheels, electrical system and dimensioned drawings.

**BMW SERVICE:** BMW Service, BMW Financial Services and the BMW brand experience.





BASE MODEL.



[ 01 ] The new BMW 2 Series Convertible in the optional Sparkling Brown metallic exterior colour and with optional 18" light alloy wheels Double-spoke style 385.

[ 02 ] The cockpit with standard leather steering wheel, one-zone automatic air conditioning, Radio BMW Professional with 6.5" display and optional multifunction buttons makes an immediate impression.



[ 03 ] The new BMW 2 Series Coupé in the Alpine White exterior colour and with optional 17" light alloy wheels Y-spoke style 380 (standard on 228i and 225d<sup>1</sup>).

[ 04 ] The optional Dakota leather seats in the Terra colourway lend the interior an elegant and comfortable atmosphere.

[ 05 ] Optional 16" light alloy wheels V-spoke style 378, 7 J x 16 with 205/55 R 16 tyres (standard on 218i<sup>2</sup>, 220i, 218d<sup>2</sup>, 220d and 220d xDrive<sup>1-3</sup>).

<sup>1</sup> Only available for the BMW 2 Series Coupé.  
<sup>2</sup> Due to become available from 03/2015.



LUXURY LINE.

■ Standard equipment    □ Optional equipment

Interior equipment features:

- Door sill finishers in aluminium, with BMW "Luxury" lettering
- Seats in leather "Dakota" Oyster with Oyster dark highlights and light interior colour; additional leather upholstery options available
- Seat heating for driver and front passenger
- Interior trim finishers in "Fineline" Stream fine-wood trim with Oxide Silver matt highlight trim finisher; additional interior trim finishers available
- Sport leather steering wheel with multifunction buttons
- Variable interior lighting in orange-red or white
- Car key with Chrome detailing
- Lights package, storage compartment package
- Cruise control with braking function

Exterior equipment features:

- 17" light alloy wheels Y-spoke style 380
- 18" light alloy wheels V-spoke style 387 with mixed tyres
- Front and rear bumpers with specific features in high-gloss Chrome
- BMW kidney grille featuring eleven slats with high-gloss Chrome fronts
- Chrome Line exterior
- Tailpipe in high-gloss Chrome
- "Luxury" lettering on the side
- Park Distance Control (PDC) rear
- Fog lights



[ 01 ] The two-tone cockpit lends the interior premium appeal. The sport leather steering wheel with multifunction buttons provides excellent grip.

[ 02 ] 17" light alloy wheels Y-spoke style 380, 7 J x 17 with 205/50 R 17 tyres.



[ 03 ] The seats with Dakota leather upholstery in Oyster including seat heating create a feel-good atmosphere in the interior.

[ 04 ] 18" light alloy wheels V-spoke style 387 with mixed tyres, front 7.5 J x 18 with 225/40 R 18 tyres, rear 8 J x 18 with 245/35 R 18 tyres.

05 □



06 □



[ 05 ] The new BMW 2 Series Convertible with Luxury Line in the optional Deep Sea Blue metallic exterior colour.

[ 06 ] The new BMW 2 Series Coupé with Luxury Line in the optional Moonlight Silver metallic exterior colour.



# SPORT LINE.

■ Standard equipment    □ Optional equipment

### Interior equipment features:

- Door sill finishers in aluminium, with "BMW Sport" lettering
- Sport seats in cloth "Track" Anthracite with red or grey highlights; additional upholstery options available
- High-gloss Black interior trim finishers with Coral Red matt highlight trim finishers; additional interior trim finishers available
- Sport leather steering wheel with multifunction buttons and red contrast stitching, alternatively available with black stitching
- Variable interior lighting in orange-red or white
- Knee pad on the side of the driver's footwell
- Instrument cluster with red accents
- Driving Experience Control including the additional Sport+ mode
- Car key with red detailing
- Lights package, storage compartment package
- Cruise control with braking function

### Exterior equipment features:

- 17" light alloy wheels Star-spoke style 379
- 18" light alloy wheels Double-spoke style 384 with mixed tyres
- Front and rear bumpers with specific features in high-gloss Black
- BMW kidney grille featuring eight exclusively designed slats with high-gloss Black fronts
- Exterior mirror caps in high-gloss Black
- Tailpipe in black Chrome
- "Sport" lettering on the side
- Park Distance Control (PDC) rear
- Fog lights



[ 01 ] The cockpit with high-gloss Black interior trim and red highlight trim creates a sporty and elegant look in the interior.

[ 02 ] 17" light alloy wheels Star-spoke style 379, 7.5 J x 17 with 225/45 R 17 tyres.



[ 03 ] The sport seats in optional Dakota leather Black with red highlights underscore the sporty ambience.

[ 04 ] 18" light alloy wheels Double-spoke style 384 with mixed tyres, front 7.5 J x 18 with 225/40 R 18 tyres, rear 8 J x 18 with 245/35 R 18 tyres.

05 □



06 □



[ 05 ] The new BMW 2 Series Convertible with Sport Line in the optional Mineral White metallic exterior colour.

[ 06 ] The new BMW 2 Series Coupé with Sport Line in the optional Mineral Grey metallic exterior colour.



M SPORT PACKAGE.

powered by 

■ Standard equipment    □ Optional equipment

Interior equipment features:

- Door sill finishers in aluminium, with "M" lettering
- Sport seats for driver and front passenger in cloth/Alcantara combination Hexagon Anthracite in exclusive M style; additional upholstery options available
- Interior trim finishers in Aluminium Hexagon with Estoril Blue matt or high-gloss Black highlight trim finisher; additional interior trim finishers available
- M leather steering wheel with multifunction buttons
- BMW Individual roofliner in Anthracite (BMW 2 Series Coupé)
- Variable interior lighting in orange-red or white
- Knee pad on the side of the driver's footwell
- M driver footrest and shortened gear lever with "M" logo
- Instrument cluster with red accents
- Driving Experience Control including the additional Sport+ mode
- Car key featuring Estoril Blue detailing
- Lights package, storage compartment package
- Cruise control with braking function

Exterior equipment features:

- 17" M light alloy wheels Double-spoke style 460 M with mixed tyres
- 18" M light alloy wheels Double-spoke style 461 M with mixed tyres
- M Aerodynamic package with a special front apron, side skirts and rear apron
- BMW kidney grille featuring eight exclusively designed slats with high-gloss Black fronts
- BMW Individual high-gloss Shadow Line
- Tailpipe trim in Chrome
- M Sport suspension
- Adaptive M suspension
- M Sport brake with blue brake callipers
- Exclusive paint finish in Estoril Blue metallic
- "M" logo on the side
- Park Distance Control (PDC) rear
- Fog lights



[ 01 ] Together with the Aluminium Hexagon interior trim, the M leather steering wheel with multifunction buttons creates a sporty look in the interior.

[ 02 ] 17" M light alloy wheels Double-spoke style 460 M with mixed tyres, front 7.5 J x 17 with 225/45 R 17 tyres, rear 8 J x 17 with 245/40 R 17 tyres.



[ 03 ] The sports seats in cloth/Alcantara combination Hexagon Anthracite with contrast stitching in Royal Blue underscore the powerful, sporty look.

[ 04 ] 18" M light alloy wheels Double-spoke style 461 M with mixed tyres, front 7.5 J x 18 with 225/40 R 18 tyres, rear 8 J x 18 with 245/35 R 18 tyres.

05 □



06 □



[ 05 | 06 ] The new BMW 2 Series Coupé and the new BMW 2 Series Convertible with M Sport package in the optional, exclusive Estoril Blue metallic exterior colour.



# BMW M235i COUPÉ AND CONVERTIBLE. M DNA INCLUDED.

The **BMW M235i** benefits from the unique expertise of BMW M engineers, with a specially fine-tuned powertrain, chassis and steering system. As a driver, you feel it most in the precise, sporty handling, which makes for a particularly intense driving experience. The M Performance TwinPower Turbo six-cylinder in-line petrol engine delivers 240kW (326hp) of power and a maximum torque of 450Nm – accompanied by a unique sound. The end result: automobiles that offer an exhilarating combination of sheer dynamism and everyday usability. The optional intelligent all-wheel xDrive system<sup>1</sup>, the low-set optional adaptive suspension with variable damper control, the responsive variable sport steering and exclusive 18" light alloy wheels in Ferric Grey metallic with mixed high-performance tyres combine to masterfully transmit power to the road. The exterior mirrors in Ferric Grey metallic as well as the M Aerodynamic package with larger air inlets<sup>2</sup> and horizontal bars in Ferric Grey metallic, special side skirts and a diffuser insert in the rear apron visually underscore the vehicle's dynamic appearance. The interior features contoured M sport seats and an easy-grip M leather steering wheel for a convincing look.

powered by 



**Lettering.** The rear of the car features a distinctive M235i model designation.

**The door sill finishers** feature M235i lettering as well.

<sup>1</sup> Only available for the BMW 2 Series Coupé.  
<sup>2</sup> Available without fog lights.



EQUIPMENT HIGHLIGHTS.

■ Standard equipment    □ Optional equipment



**[ 01 ]** The high-beam assistant relieves the driver at night by automatically activating the high-beam and low-beam headlights depending on the presence of oncoming traffic or vehicles in front.

**[ 02 ]** Glass sliding/vent roof, electric, with sun protection, trap release, and comfort opening and closing functions (BMW 2 Series Coupé).

**[ 03 ]** The BMW Individual high-gloss Shadow Line design package features numerous external equipment features in high-gloss Black (standard on M235i and M235i xDrive<sup>1</sup>).

**[ 04 ]** Xenon headlights (standard on M235i and M235i xDrive<sup>1</sup>) enhance visibility, providing optimal illumination in every situation when combined with adaptive headlights.

**[ 05 ]** The Chrome Line exterior with details in high-gloss Chrome gives the vehicle a particularly sophisticated look (standard on 228i and 225d<sup>2</sup>).

**[ 06 ]** The fog lights<sup>3</sup> in the front apron ensure better visibility and improved safety (standard on 228i and 225d<sup>4</sup>).

**[ 07 ]** Thanks to its striking rear lights in LED technology, the vehicle is instantaneously recognisable as a BMW.



**[ 08 ]** Opening the doors and starting the engine without having to use the car key – the comfort access system makes it possible.

**[ 09 ]** The rain sensor including automatic headlight activation automatically switches on the windscreen wipers and the low-beam headlights.

**[ 10 ]** The electric softtop is characterised by its great insulating properties and can also be opened or closed while driving.<sup>3</sup>

**[ 11 ]** Tailpipe in black Chrome, single (shown here with Sport Line for 218i<sup>4</sup>, 220i, 218d<sup>4</sup>).

**[ 12 ]** The removable tow ball<sup>2</sup> on the trailer tow hitch ensures that the sporty design of the vehicle's rear is in no way negatively impacted when the hitch is not being used.

**[ 13 ]** The scratch-resistant rear window on the softtop provides good rearward visibility. It too fully disappears into the luggage compartment when the softtop is folded down (BMW 2 Series Convertible).

**[ 14 ]** The wind deflector provides the driver and front passenger with effective protection from draughts. When not in use, it can be compactly stored in a bag in the luggage compartment (BMW 2 Series Convertible).



DISCOVER MORE EQUIPMENT AVAILABLE FOR  
THE NEW BMW 2 SERIES COUPÉ AND THE NEW BMW 2 SERIES CONVERTIBLE.

<sup>1</sup> Only available for the BMW 2 Series Coupé.  
<sup>2</sup> Not available for the M235i and M235i xDrive.  
<sup>3</sup> Fully automatic opening and closing at speeds of up to 50km/h.  
<sup>4</sup> Due to become available from 03/2015.



EQUIPMENT HIGHLIGHTS.

■ Standard equipment    □ Optional equipment



**[ 01 ]** The standard front seats offer manual adjustment options for the fore-and-aft position, backrest angle, headrest and seat height, including the easy-entry function.

**[ 02 ]** The iDrive Touch Controller (part of navigation system Professional<sup>1</sup>): intuitive control via the iDrive Controller touchpad.

**[ 03 ]** The M leather steering wheel features multifunction buttons, more pronounced thumbrests and a thicker rim for a better grip (standard for the M235i and the M235i xDrive<sup>2</sup>).



**[ 04 ]** Sport leather steering wheel, black, including multifunction buttons, with three spokes and a thicker wheel rim for great handling and easy operation of various in-car systems (standard on 228i and 225d<sup>3</sup>).

**[ 05 ]** Sport seats for the driver and front passenger offer great comfort and perfect lateral support thanks to their electronic adjustment options for various parts of the seat.

**[ 07 ]** The automatic air conditioning with two-zone control includes Automatic Air Recirculation (AAR) with an active carbon filter, as well as fogging and solar sensors.



**[ 08 ]** The lights package features numerous LED lights both inside and outside the car for increased convenience and a premium look. The above image illustrates the ambient light feature (included).

**[ 09 ]** Navigation system Professional<sup>1</sup>, incl. hands-free facility, USB interface, Radio Professional with DVD drive – operated via the iDrive Touch Controller.

**[ 10 ]** The Speed Limit Info including the no-overtaking indicator provides information on speed limits as well as no-overtaking zones.



**[ 11 ]** Harman Kardon surround sound system with 360 W digital amplifier, 7 channels, vehicle-specific equalizer and 12 loudspeakers including centre speaker.

**[ 12 ]** The rear view camera shows the area behind the vehicle on the Control Display. Interactive guide lines and obstacle markings help the driver when reversing.

**[ 13 ]** The Driving Assistant<sup>3</sup> issues a warning whenever there is an unintentional lane change or when it detects a possible collision, and brakes automatically in the event of an emergency.

**[ 14 ]** When the backrest is folded down, a through-loading gap appears, enabling the transportation of long objects.

<sup>1</sup> Only available for the BMW 2 Series Coupé.  
<sup>2</sup> Benefiting from automatic map update via the permanently installed SIM card, the navigation system Professional comes with free navigation map updates for the first three years.  
<sup>3</sup> This function can be limited by darkness and fog.



WHEELS AND TYRES.

■ Standard equipment   □ Optional equipment   ○ Accessories



**[ 01 ]** 16" light alloy wheels V-spoke style 378, 7 J x 16 with 205/55 R 16 tyres (standard on 218i<sup>1</sup>, 220i, 218d<sup>2</sup>, 220d and 220d xDrive<sup>3</sup>).

**[ 02 ]** 16" light alloy wheels Star-spoke style 654, 7 J x 16 with 205/55 R 16 tyres.

**[ 03 ]** 18" light alloy wheels Double-spoke style 385 with mixed tyres, front 7.5 J x 18 with 225/40 R18 tyres, rear 8 J x 18 with 245/35 R 18 tyres.

**[ 04 ]** 16" light alloy wheels Star-spoke style 376, 7 J x 16 with 205/55 R 16 tyres.

**[ 05 ]** 17" light alloy wheels Double-spoke style 655, 7.5 J x 17 with 225/45 R 17 tyres.

**[ 06 ]** 17" light alloy wheels Turbine style 381, 7.5 J x 17 with 225/45 R17 tyres.

**[ 07 ]** 19" BMW M Performance light alloy wheels Double-spoke style 405 M with mixed tyres, front 7.5 J x 19 with 225/35 R 19 tyres, rear 8 J x 19 with 245/30 R 19 tyres.<sup>3</sup>

**[ 08 ]** 19" light alloy wheels Double-spoke style 361 in Ferric Grey with mixed tyres, front 7.5 J x 19 with 225/35 R 19 tyres, rear 8 J x 19 with 245/30 R 19 tyres.<sup>3</sup>

ORIGINAL BMW ACCESSORIES.



**[ 01 ]** The racing bicycle holder is crafted from high-quality materials and can be easily mounted on the roof using a simple clamping system. No tools required.

**[ 02 ]** The coat hanger from the Travel & Comfort system range allows clothes to be transported without creasing. Detachable for use outside the vehicle.

**[ 03 ]** Fitted luggage compartment mat, Sport. This durable, non-slip mat protects against dirt and moisture. Its black and red design complements the Sport Line.

**[ 04 ]** The snap-in adapter for the Samsung Galaxy S4 provides a safe docking system with a quick charging function. Music files can be played back through the vehicle's loudspeakers.

**[ 05 ]** Hard-wearing USB cable adapter for integrating and simultaneously charging compatible Apple iPod™ and iPhone™ devices.

**[ 06 ]** All-weather floor mats, Sport. Perfectly fitted to the front footwells, these mats protect from moisture, dirt and mould. Their black and red design complements the Sport Line.

<sup>1</sup> Due to become available from Q3/2015.  
<sup>2</sup> Only available for the BMW 2 Series Coupé.  
<sup>3</sup> You can find these and other wheels as Original BMW Accessories on [www.bmw.com/accessories](http://www.bmw.com/accessories)

Original BMW Accessories are available in many categories: exterior, interior, communications & information and transport & luggage compartment solutions. To find out more about the complete range of Original BMW Accessories, contact your BMW partner, who will be happy to advise you and provide you with a comprehensive brochure. For further information please visit [www.bmw.com/accessories](http://www.bmw.com/accessories)



EXTERIOR COLOURS.

■ Standard equipment    □ Optional equipment



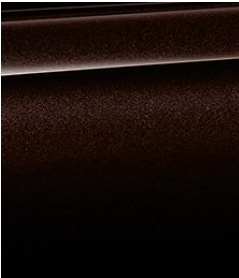
■ Non-metallic 300 Alpine White<sup>1</sup>



■ Non-metallic 668 Black



□ Metallic 475 Black Sapphire<sup>2</sup>



□ Metallic B53 Sparkling Brown



□ Metallic A76 Deep Sea Blue



□ Metallic B38 Midnight Blue



□ Metallic B39 Mineral Grey<sup>2</sup>



□ Metallic A96 Mineral White<sup>2</sup>



□ Metallic AB3 Glacier Silver<sup>2</sup>

M SPORT PACKAGE



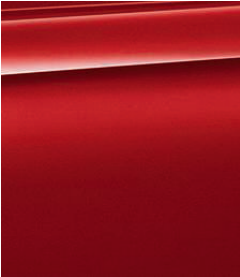
□ Metallic B66 Moonlight Silver



□ Metallic B45 Estoril Blue<sup>3</sup>



□ Metallic B44 Valencia Orange



□ Metallic A75 Melbourne Red<sup>2</sup>



THE NEW BMW 2 SERIES CONVERTIBLE IN YOUR FAVOURITE COLOUR.  
DISCOVER IT ONLINE NOW.

<sup>1</sup> Also available as standard for the M Sport package, M235i xDrive (only available for the BMW 2 Series Coupé) and M235i.  
<sup>2</sup> Also available as an option for the M Sport package, M235i xDrive (only available for the BMW 2 Series Coupé) and M235i.  
<sup>3</sup> Exclusively available for the M Sport package, M235i xDrive (only available for the BMW 2 Series Coupé) and M235i.

**[ Print colours ]** The colours printed above are intended to provide you with a first impression of paints and materials available for your BMW. Experience has shown that printed versions of paint, upholstery and interior trim colours cannot faithfully reproduce the actual appearance of the originals. We recommend therefore that you consult your BMW dealer who will be able to show you original samples and assist with special requests.



INTERIOR COLOURS.

■ Standard equipment □ Optional equipment



CLOTH

Available with	
■ Base model	Move cloth BDAT Anthracite
■ Sport Line	Track cloth BEL2 Anthracite with red highlights
■ Sport Line	Track cloth BEL1 Anthracite with grey highlights

CLOTH/LEATHER  
COMBINATION

Available with	
■ M Sport package	Hexagon cloth/ Alcantara upholstery HAAT Anthracite <sup>1</sup>
□ Base model □ Sport Line	Breeze cloth/leather upholstery CBAT Anthracite, with Black interior colour
□ Base model □ Sport Line	Breeze cloth/leather upholstery CBOP Oyster, with Black interior colour

LEATHER

Available with	
□ Base model ■ Luxury Line □ Sport Line □ M Sport package	Dakota leather LCSW Black <sup>1</sup>
□ Base model ■ Luxury Line □ Sport Line □ M Sport package	Dakota leather LCB8 Terra <sup>2</sup>
□ Base model ■ Luxury Line □ Sport Line □ M Sport package	Dakota leather LCOM Oyster with Oyster dark highlights, with Black interior colour <sup>3</sup>
□ Sport Line	Dakota leather LCL3 Black with red highlights
□ Sport Line □ M Sport package	Dakota leather LCL5 Coral Red with black highlights <sup>2</sup>
■ Luxury Line	Dakota leather LCL9 Oyster with Oyster dark highlights, with Oyster interior colour



INTERIOR TRIMS

Available with	
■ Base model	4CG Matt Satin Silver
□ Base model ■ Sport Line	4GH Pearl dark with matt Oxide Silver highlight
□ Base model ■ Sport Line □ M Sport package	4GD High-gloss Black with matt Oxide Silver highlight <sup>2</sup>
■ Sport Line	4LV High-gloss Black with matt Coral Red highlight
□ Base model ■ Luxury Line □ Sport Line ■ M Sport package	4GK Fine Brushed Aluminium with matt Oxide Silver highlight <sup>1</sup>
□ Base model ■ Luxury Line □ Sport Line ■ M Sport package	4FT Fine Brushed Aluminium with high-gloss Black highlight <sup>1</sup>
■ M Sport package	4WF Aluminium Hexagon with matt Estoril Blue highlight <sup>1</sup>
■ M Sport package	4WG Aluminium Hexagon with high-gloss Black highlight <sup>1</sup>
□ Base model ■ Luxury Line □ Sport Line □ M Sport package	4LC FineLine Stream fine- wood trim with matt Oxide Silver highlight <sup>2</sup>

INTERIOR FINISHES

Available with	
■ Luxury Line □ Sport Line □ M Sport package	4F8 FineLine Pure fine- wood trim with matt Oxide Silver highlight <sup>2</sup>
■ Base model ■ Luxury Line □ Sport Line ■ M Sport package	Black <sup>1</sup>
■ Luxury Line	Oyster

SOFT TOP COLOURS

Available with	
■ Base model ■ Luxury Line □ Sport Line ■ M Sport package	388 Black <sup>3</sup>
□ Base model □ Luxury Line □ Sport Line □ M Sport package	3YA Anthracite with Silver Effect <sup>4</sup>
□ Base model □ Luxury Line □ Sport Line □ M Sport package	3YF Brown with Silver Effect <sup>4</sup>

Please note that even normal long or short-term use can lead to unrecoverable upholstery damage. This can be caused in particular by non-colourfast clothing.

Please note that the interior colour is dependent on the selected upholstery colour.

<sup>1</sup> Also available as standard for the M235i xDrive (only available for the BMW 2 Series Coupé) and M235i.  
<sup>2</sup> Also available as an option for the M235i xDrive (only available for the BMW 2 Series Coupé) and M235i.  
<sup>3</sup> Also available as standard for the M235i (Convertible).  
<sup>4</sup> Also available as an option for the M235i (Convertible).



BMW 2 SERIES COUPÉ							
	218i¹	220i	228i	M235i M235i xDrive	218d	220d 220d xDrive¹	225d

Weight/capacity							
Unladen EU²	kg	1415 [1435]	1425 [1440]	1460 [1480]	1530 [1545]	1430 [1450]	1465 [1485]
Unladen EU² (xDrive)	kg	–	–	–	[1600]	–	[1560]
Max. permissible	kg	1850 [1870]	1860 [1875]	1895 [1915]	1965 [1980]	1865 [1885]	1900 [1920]
Max. permissible (xDrive)	kg	–	–	–	[2035]	–	[1995]
Permitted load	kg	510	510	510	510	510	510
Permitted axle load front/rear³	kg	875/1040	880/1040	900/1065	970/1080	890/1045	905/1065
Permitted roof load	kg	75	75	75	75	75	75
Permitted trailer load, unbraked⁴	kg	680	680	700	–	690	710
Permitted trailer load (xDrive)	kg	–	–	–	–	750	–
Permitted trailer load, braked, max. 12% gradient⁵,⁴	kg	1500	1200	1200	–	1200	1500
Permitted trailer load, braked, max. 8% gradient⁵,⁴	kg	1500	1200	1200	–	1200	1500
Permitted towbar download	kg	75	75	75	–	75	75
Tank capacity	l	52	52	52	52	52	52
Luggage compartment capacity	l	390	390	390	390	390	390

Engine⁵,⁶							
Cylinders/valves		3/4	4/4	4/4	6/4	4/4	4/4
Capacity	cc	1499	1997	1997	2979	1995	1995
Stroke/bore	mm	94.6/82.0	90.1/84.0	90.1/84.0	89.6/84.0	90.0/84.0	90.0/84.0
Max. output	kW (hp)	100 (136)	135 (184)	180 (245)	240 (326)	105 (143)	140 (190)
	rpm	4500–6000	5000–6250	5000–6500	5800–6000	4000	4000
Max. torque	Nm	220	270	350	450	320	400
	rpm	1250	1250–4500	1250–4800	1300–4500	1750–2500	1750–2500
Compression ratio	:1	11.0	11.0	10.0	10.2	16.5	16.5

Transmission							
Standard transmission ratios³	IV/MII:1	4.55/2.55/1.66	4.55/2.55/1.66	3.50/2.01/1.31	4.11/2.32/1.54	4.00/2.11/1.38	4.11/2.25/1.40
	IV/V/Vi:1	1.23/1.00/0.83	1.23/1.00/0.83	1.00/0.81/0.70	1.18/1.00/0.85	1.00/0.78/0.65	1.00/0.80/0.66
	VII/VIII/R:1	–/–/4.14	–/–/4.14	–/–/3.19	–/–/3.73	–/–/3.65	–/–/3.73
Final drive ratio	:1	2.81	3.08	3.91	3.08	3.15	3.08
		2.65					

Performance							
Top speed	km/h	212 [212]	235 [230]	250⁶ [250⁶]	250⁶ [250⁶]	213 [213]	230 [230]
Top speed (xDrive)	km/h	–	–	–	[250⁶]	–	–
Acceleration 0–100km/h	sec	8.8 [8.9]	7.0 [7.0]	5.8 [5.7]	5.0 [4.8]	8.9 [8.6]	7.1 [7.0]
Acceleration 0–100km/h (xDrive)	sec	–	–	–	[4.6]	–	–
Acceleration 90–120km/h in 4th/5th gear (with standard transmission)	sec	–	–8.3	–6.5	–4.9	–9.3	–7.2
		–	–	–	–	–	–

Fuel consumption⁵,⁶,⁷							
Urban	l/100km	–	8.3–8.7 [7.7–8.0]	8.7 [8.5]	10.9 [10.3]	5.3–5.5 [5.1–5.4]	5.0–5.4 [4.4–4.7]
Extra-urban	l/100km	–	4.8–5.0 [4.6–4.8]	5.4 [5.1]	6.4 [5.9]	3.8–3.9 [3.7–3.9]	3.5–3.8 [3.4–3.7]
Combined	l/100km	–	6.1–6.3 [5.7–6.0]	6.6 [6.3]	8.1 [7.6]	4.3–4.5 [4.2–4.4]	4.1–4.4 [3.8–4.1]
CO₂ emissions, combined	g/km	–	142–148 [134–139]	154 [148]	189 [176]	114–119 [111–117]	107–115 [99–107]
		–	–	–	–	–	–

Fuel consumption⁵,⁶,⁷ (xDrive)							
Urban	l/100km	–	–	–	[10.8]	–	–
Extra-urban	l/100km	–	–	–	[6.1]	–	–
Combined	l/100km	–	–	–	[7.8]	–	–
CO₂ emissions, combined	g/km	–	–	–	[182]	–	–
		–	–	–	–	–	–

BMW 2 SERIES COUPÉ							
	218i¹	220i	228i	M235i M235i xDrive	218d	220d 220d xDrive¹	225d

Wheels							
Tyre dimensions front/rear	205/55 R 16 V	205/55 R 16 V	205/50 R 17 W	225/40/245/35 ZR 18 V	205/55 R 16 V	205/55 R 16 V	205/50 R 17 W
Wheel dimensions front/rear	7 J x 16	7 J x 16	7 J x 17	7.5/8 J x 18	7 J x 16	7 J x 16	7 J x 17
Material	Light alloy	Light alloy	Light alloy	Light alloy	Light alloy	Light alloy	Light alloy

Electrical system							
Battery capacity	Ah	90 [80]	80	80	80	90 [80]	80
Alternator output	A	180	170	170	170	175	175
	W	2520	2380	2380	2380	2450	2100
		2450					

¹ Due to become available from 03/2015. Preliminary figures, based on the ECE test cycle, that still await official confirmation; missing figures were not available at the time of going to press.

² The figure quoted includes a 90 per cent tank filling, 68kg for the driver and 7kg for luggage.

³ Unladen weight applies to vehicles with standard equipment. Optional equipment may increase this figure.

⁴ These figures may be different for models with xDrive.

⁵ The overall weight of the trailer must not exceed the maximum permissible trailer load, taking into account the maximum permissible towbar download.

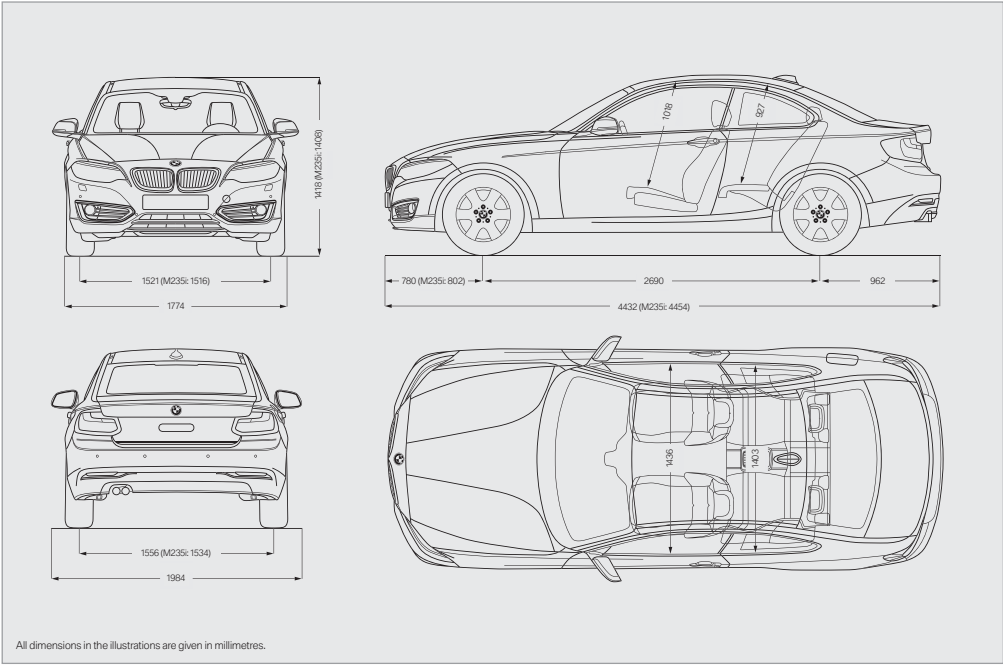
⁶ BMW recommends the use of RON 95 super unleaded petrol. Unleaded RON 91 and higher with a maximum ethanol content of 10% may also be used. Output and fuel consumption figures apply to RON 98 fuel.

⁷ All engines comply with the EU6 emissions standard. Fuel consumption is determined in accordance with the ECE driving cycle made up of approximately one-third urban traffic and two-thirds extra-urban driving (based on the distance covered). CO₂ emissions are measured in addition to fuel consumption.

⁸ Fuel consumption and CO₂ emissions are dependent on the selected wheel and tyre size. Optional equipment may increase these figures. Please consult your BMW partner for in-depth information.

⁹ Electronically limited.

Figures in [ ] apply to vehicles with Steptronic transmission.





BMW 2 SERIES CONVERTIBLE					
	218i <sup>1</sup>	220i	228i	M235i	220d

Weight/capacity					
Unladen EU <sup>2</sup>	kg	1570 [1590]	1585 [1605]	1610 [1630]	1675 [1695]
Max. permissible	kg	1965 [1985]	1980 [2000]	1975 [1995]	2030 [2050]
Permitted load	kg	470	470	440	470
Permitted axle load front/rear	kg	865/1160	865/1160	900/1130	960/1145
Permitted roof load	kg	–	–	–	–
Permitted trailer load, unbraked <sup>3</sup>	kg	750	750	750	750
Permitted trailer load, braked, max. 12% gradient <sup>3</sup>	kg	1500	1200	1200	–
Permitted trailer load, braked, max. 8% gradient <sup>3</sup>	kg	1500	1200	1200	–
Permitted towbar download	kg	75	75	75	–
Tank capacity	l	52	52	52	52
Luggage compartment capacity, top down/up	l	280/335	280/335	280/335	280/335

Engine <sup>4,5</sup>					
Cylinders/valves		3/4	4/4	4/4	6/4
Capacity	cc	1499	1997	1997	2979
Stroke/bore	mm	94.6/82.0	90.1/84.0	90.1/84.0	89.6/84.0
Max. output	kW (hp)	100 (136)	135 (184)	180 (245)	240 (326)
	rpm	4500–6000	5000–6250	5000–6500	5800–6000
Max. torque	Nm	220	270	350	450
	rpm	1250	1250–4500	1250–4800	1300–4500
Compression ratio	:1	11.0	11.0	10.0	10.2

Transmission					
Standard transmission ratios	I/II/III:1	4.55/2.55/1.66	4.55/2.55/1.66	3.68/2.06/1.31	4.11/2.32/1.54
	IV/V/VI:1	1.23/1.00/0.83	1.23/1.00/0.83	1.00/0.81/0.68	1.18/1.00/0.85
	VII/VI/III:1	–/–/4.14	–/–/4.14	–/–/3.35	–/–/3.73
Final drive ratio	:1	3.08	3.15	3.91	3.08

Performance					
Top speed	km/h	207 [205]	231 [226]	250 <sup>*</sup> [250 <sup>*</sup> ]	250 <sup>*</sup> [250 <sup>*</sup> ]
Acceleration 0–100km/h	sec	9.4 [9.6]	7.5 [7.6]	6.1 [6.0]	5.2 [5.0]
Acceleration 80–120km/h in 4th/5th gear (with standard transmission)	sec	–	–/9.3	–/7.2	–/5.6

Fuel consumption <sup>4,5,6</sup>					
Urban	l/100km	–	8.9–9.3 [8.3–8.6]	9.1 [8.8]	11.5 [10.7]
Extra-urban	l/100km	–	5.1–5.4 [5.0–5.1]	5.5 [5.3]	6.8 [6.2]
Combined	l/100km	–	6.5–6.8 [6.2–6.4]	6.8 [6.6]	8.5 [7.9]
CO <sub>2</sub> emissions, combined	g/km	–	152–159 [144–149]	159 [154]	199 [184]

BMW 2 SERIES CONVERTIBLE					
	218i <sup>1</sup>	220i	228i	M235i	220d

Wheels					
Tyre dimensions front/rear	205/55 R 16 W	205/55 R 16 W	205/50 R 17 Y	225/40/245/35 ZR 18 Y	205/55 R 16 W
Wheel dimensions front/rear	7 J x 16	7 J x 16	7 J x 17	7.5/8 J x 18	7 J x 16
Material	Light alloy	Light alloy	Light alloy	Light alloy	Light alloy

Electrical system					
Battery capacity	Ah	90 [80]	80	80	90
Alternator output	A	180	170	170	150
	W	2520	2380	2380	2100

<sup>1</sup> Due to become available from 03/2015. Preliminary figures, based on the ECE test cycle, that still await official confirmation; missing figures were not available at the time of going to press.

<sup>2</sup> The figure quoted includes a 90 per cent tank filling, 68kg for the driver and 7kg for luggage.

<sup>3</sup> Unladen weight applies to vehicles with standard equipment. Optional equipment may increase this figure.

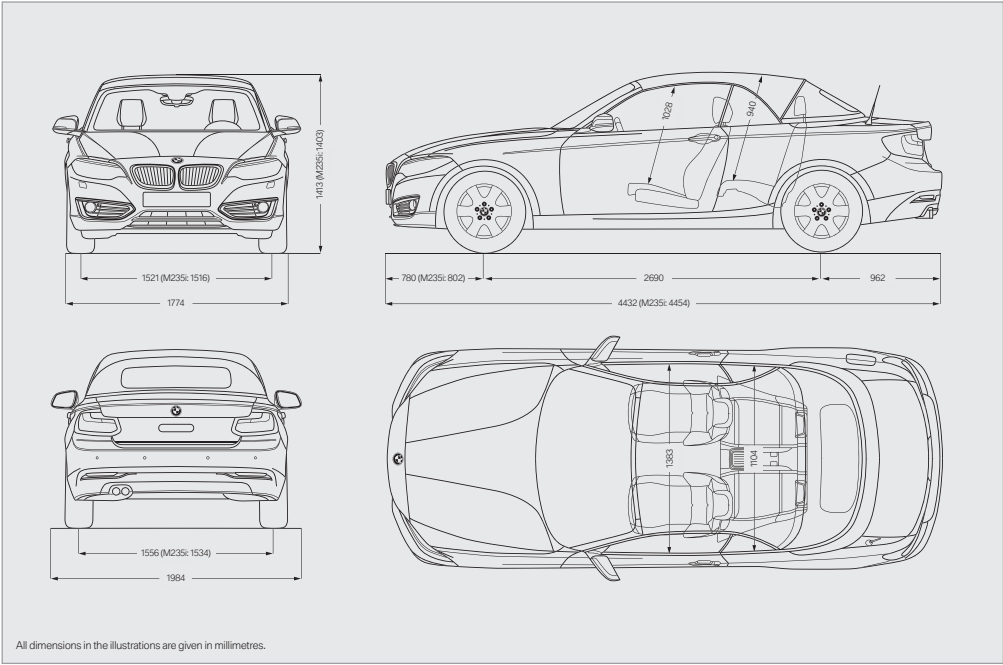
<sup>4</sup> The overall weight of the trailer must not exceed the maximum permissible trailer load, taking into account the maximum permissible towbar download.

<sup>5</sup> All engines comply with the EU6 emissions standard. Fuel consumption is determined in accordance with the ECE driving cycle made up of approximately one-third urban traffic and two-thirds extra-urban driving (based on the distance covered). CO<sub>2</sub> emissions are measured in addition to fuel consumption.

<sup>6</sup> Fuel consumption and CO<sub>2</sub> emissions are dependent on the selected wheel and tyre size. Optional equipment may increase these figures. Please consult your BMW partner for in-depth information.

<sup>7</sup> Electronically limited.

Figures in [ ] apply to vehicles with Steptronic transmission.





# WELL TAKEN CARE OF WITH BMW SERVICES:

When you buy a BMW, you can look forward to superb service and comprehensive customer care. For example, the **Condition Based Service** independently tracks both service fluid levels and the condition of parts subject to wear and then notifies you in the display when the vehicle requires servicing. So you only need to go to your BMW service partner when it's really necessary. When you do go, our

**qualified BMW service specialists** take care of your vehicle using the newest workshop technology and only **original BMW parts**. This service is available worldwide in more than 3,300 BMW service partner establishments in over 150 countries, to provide you with limitless driving pleasure.

## BMW SERVICE.



**BMW Service Inclusive\*:** BMW Service Inclusive enables you to enjoy unlimited driving pleasure in your new BMW. You can select different levels of coverage and various contract durations. Costs for maintenance, inspection and wear are covered for the entire duration of the contract. Of course, only Original BMW Parts will be used for any repairs. BMW Service Inclusive is not just effective in your country, but worldwide, at all participating BMW Service partners. For further information visit [www.bmw.com/serviceinclusive](http://www.bmw.com/serviceinclusive)



**BMW Mobile Service\*:** This service is there for you in case of a breakdown, day and night. Specially trained BMW technicians do everything necessary, on the phone or on-site, to get your car back on the road as fast as possible. We offer a comprehensive country-specific mobility package for breakdowns and insurance that covers you in the event of an accident or theft. And in case of an accident, call us at the BMW accident hotline! We'll take care of calling the police, an ambulance, a tow truck, a replacement car, notifying your insurance company and much more. For more information visit [www.bmw.com](http://www.bmw.com)



**BMW TeleServices\*:** With Condition Based Service, you'll be automatically notified in the display of your next necessary service appointment. Provided you've consented, the most important vehicle data required for analysis will be relayed to BMW automatically. Your assigned BMW service partner will access the information and contact you free of charge to make a service appointment – if one is necessary. To access BMW TeleServices, the vehicle must be equipped with the optional Intelligent Emergency Call or ConnectedDrive Services. If necessary, the service can be deactivated at any time. For more on this topic please visit [www.bmw.com/teleservices](http://www.bmw.com/teleservices)



**BMW Financial Services:** Tailor-made finance: BMW Financial Services offers you attractive leasing, finance and insurance packages. For further information visit [www.bmwfs.com](http://www.bmwfs.com) or ask your local BMW partner to make you an individual offer.

## THE BMW EXPERIENCE.



**BMW TV\*:** [www.bmw.tv](http://www.bmw.tv) enables you to experience the BMW brand in all its diversity. Features, portraits and background reports provide you with information on automobiles, innovations, sports and lifestyle topics.



**BMW Driving Experience:** The better you control your BMW, the more enjoyment you will derive from driving it. Use our training courses to learn for yourself what it means to reach a car's physical limits on various types of surfaces, and what you have to do to control your vehicle even in extreme situations. For further information please visit [www.bmwdrivingexperience.com](http://www.bmwdrivingexperience.com)



**BMW Welt:** A visit to BMW Welt is something you will never forget, whether you go to pick up a new car or just to enjoy the fascination of the brand. To collect a new vehicle, you can choose between three options: Premium Compact, Premium or Premium Plus. To enjoy BMW Welt online, simply visit [www.bmw-welt.com/en](http://www.bmw-welt.com/en)



**BMW Magazine:** In BMW Magazine, experience the newest BMW models in front of stunning backdrops. Discover new design trends, travel destinations and the richness of modern life. Encounter people with visionary ideas who are changing the world. Find out more at [www.bmw.com/magazin](http://www.bmw.com/magazin)

\* May not be available in all countries. Please consult your BMW partner.

# SHAPING THE FUTURE – RESPONSIBLY.

In 2013, the BMW Group was once again listed in the Dow Jones Sustainability World and Europe Indices and thus ranked one of the most sustainable automotive companies worldwide. The development of efficient vehicle concepts and eco-friendly production processes, up to and including recycling, is an integral part of our engineering philosophy. BMW EfficientDynamics standards have enabled us to cut the CO<sub>2</sub> emissions of our fleet of new vehicles in Europe by more than 30% between 1995 and today. We're also aiming to reduce the amount of resources such as water and energy used in production by 45% between 2006 and 2020. Production at our engine plant in Steyr has been waste-water free since 2007. And of course each of our vehicles is designed for easy and economical recycling after its long running life. Please contact your BMW partner on all matters regarding your end-of-life vehicle. For further information please visit our website.

[www.bmw.com/EfficientDynamics](http://www.bmw.com/EfficientDynamics)  
[www.bmwgroup.com/responsibility](http://www.bmwgroup.com/responsibility)  
[www.bmw.com/recycling](http://www.bmw.com/recycling)





More about BMW



Sheer  
Driving Pleasure

[www.bmw.com](http://www.bmw.com)



The models illustrated in this brochure show the specifications and configurations (standard and optional equipment) of vehicles produced by BMW AG for the German market. According to the specific requirements of other markets, alterations in standard and optional equipment and the configurations available for the different models, as described in this brochure, may occur. For more precise information about country-specific vehicle versions, please contact your local BMW partner. Subject to change in design and equipment.

© BMW AG, Munich/Germany. Not to be reproduced wholly or in part without written permission of BMW AG, Munich.

4 11 002 335 20 2 2014 BB. Printed in Germany 2014.



BMW recommends  
**Original BMW Quality Oil.**